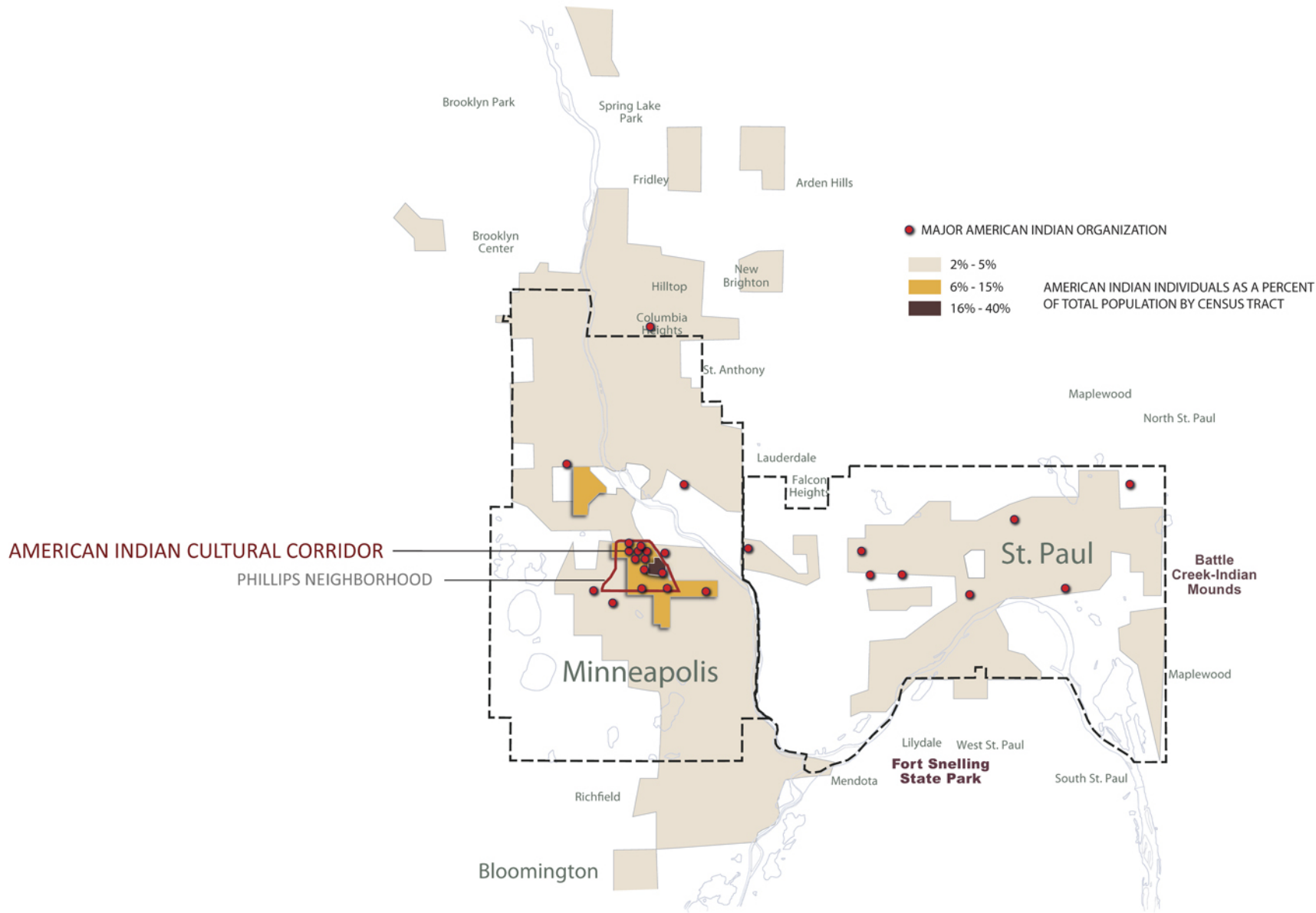




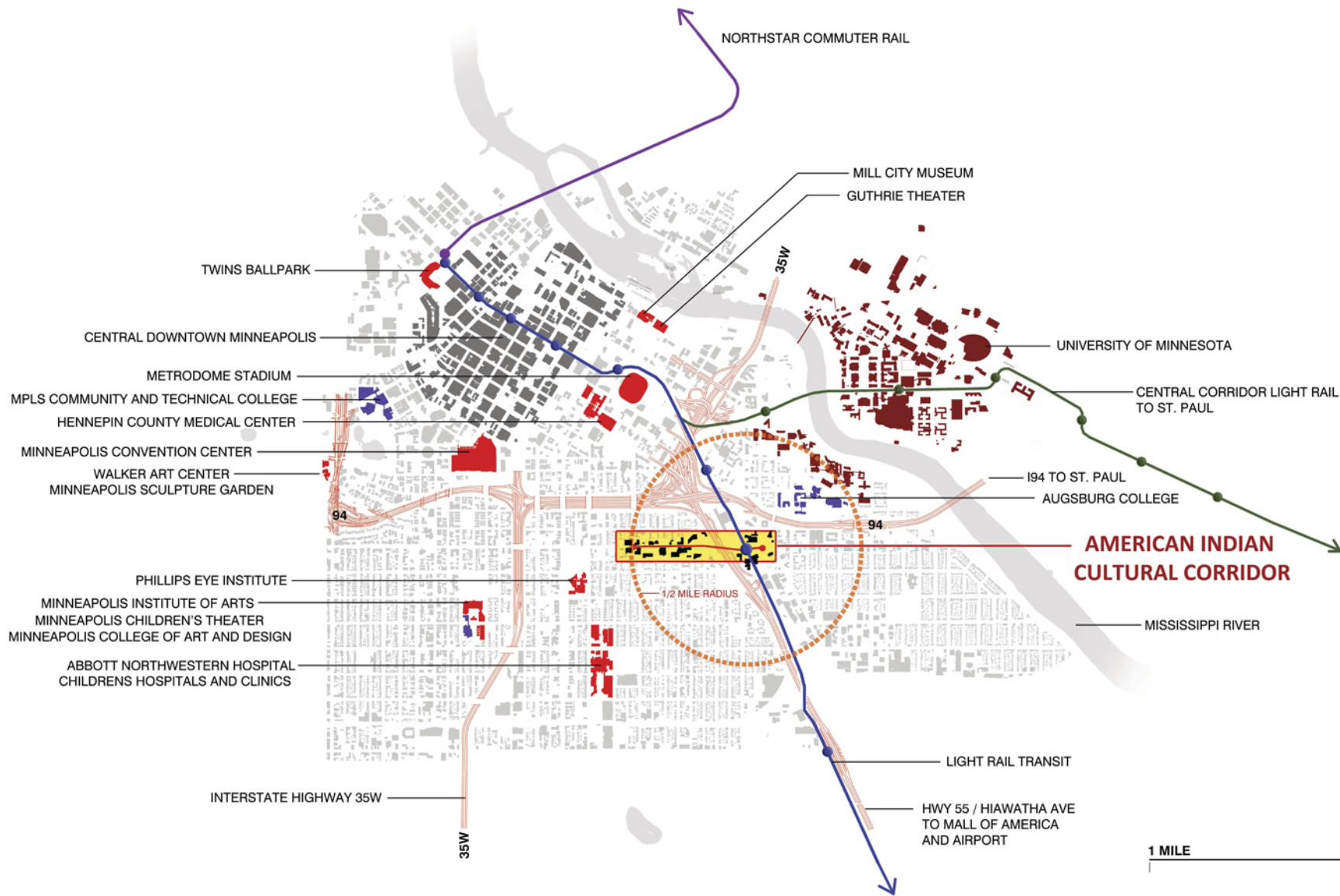
Community • Strength • PROMISE

Justin Huenemann, President
Native American Community Development Institute

www.nacdi.org







Franklin Avenue: THEN and NOW

16th and Franklin Ave (Homeless Camp)



Then



Now

Franklin Avenue: THEN and NOW

Many Rivers East, 15th and Franklin Avenue



Then



Now

Franklin Avenue: THEN and NOW

14th and Franklin (The Corral)



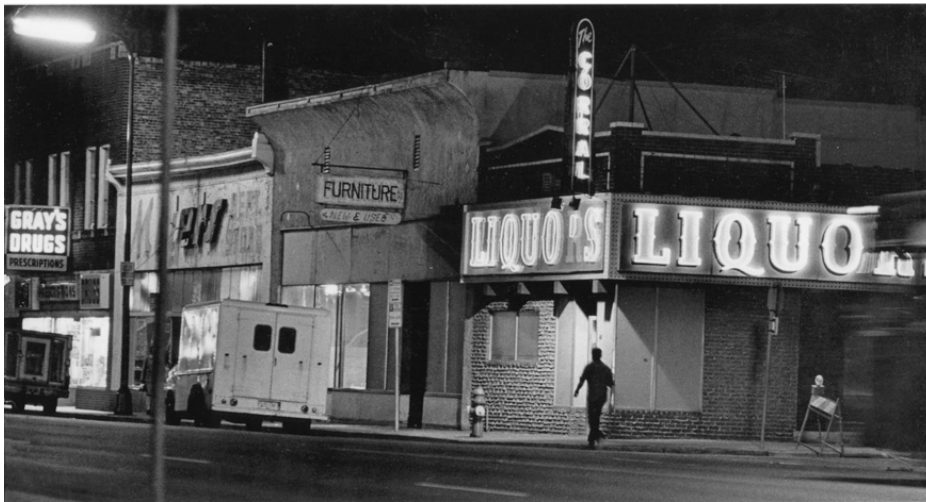
Then



Now

Franklin Avenue: THEN and NOW

Franklin Business Center, 14th and Franklin (Grays Drug, The Corral)



Then



Now

Franklin Avenue: THEN and NOW

Many Rivers West, 14th and Franklin Ave



Image from the Metropolitan Design Center Image Bank.
© Roger Miller 2004. Used with permission.
Please remember to use the credit line above.

Then



Now

Franklin Avenue: THEN and NOW

Ancient Traders, 13th and Franklin Ave



Then



Now

Franklin Avenue: THEN and NOW

Franklin Street Bakery, 11th and Franklin Ave (Super America)



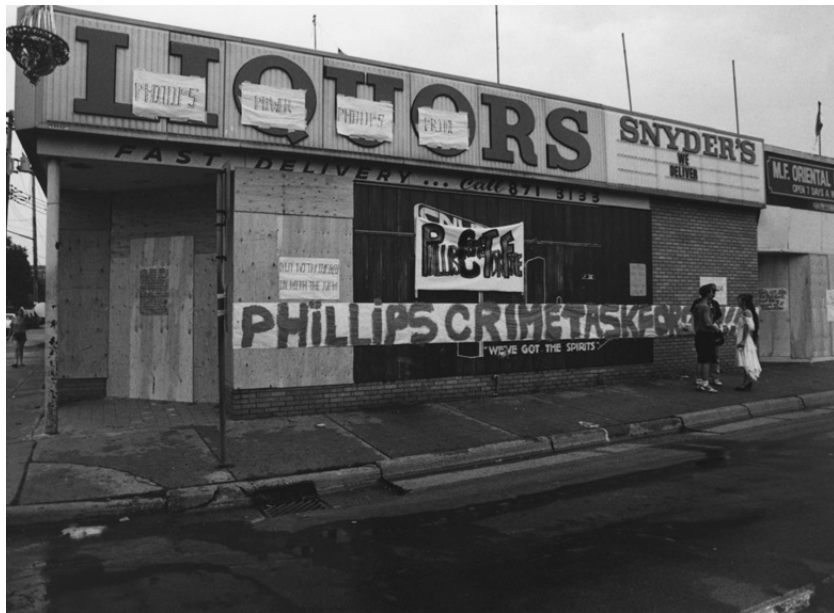
Then



Now

Franklin Avenue: THEN and NOW

Peavey Park, Chicago and Franklin Ave (Snyders Liquor)



Then



Now

Community Engagement



Community Engagement



Community Engagement



Community Ownership



Community Results



Franklin Avenue: Moving Forward



Cultural Corridor Banner



Community Bank



Sidewalk Flowers

Franklin Avenue: Moving Forward



Community Mural

Franklin Avenue: Moving Forward



Franklin Avenue: Moving Forward



Community Mural

Franklin Avenue: Moving Forward



Community Sculpture

Franklin Avenue: Moving Forward



Twin Cities American Indian Arts Festival

Franklin Avenue: Moving Forward

14th and Franklin Ave (Open Arms)



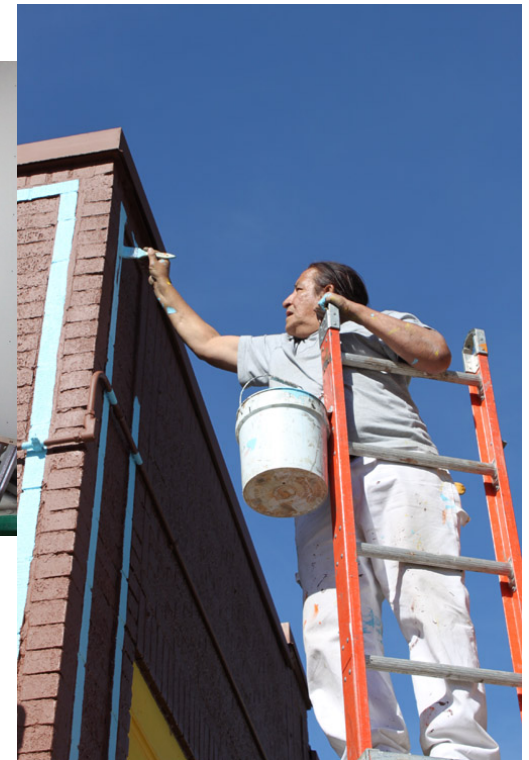
Then



2011 (All My Relations Gallery)

Franklin Avenue: Moving Forward

14th and Franklin Ave (Open Arms)



All My Relations Gallery

Franklin Avenue: Moving Forward



All My Relations Gallery and
Powwow Grounds Coffee Shop

Franklin Avenue: Moving Forward



THANK YOU FOR LISTENING
TO OUR STORY!



www.nacdi.org

1414 East Franklin Avenue

Minneapolis, MN 55404

Ph. 612-235-4976